



Field Medical Record

Objective



- Our objective is to create a digital Field Medical Record that brings real value in the field:
 - supporting **first responders** at an Advanced Medical Post,
 - serving the **CGDIS medical staff** in their operations,
 - forming the **foundation for the NATO medical card**, and
 - acting as the **primary test record for BFAST**.
- A Field Medical Record is a patient medical file created and maintained outside the hospital environment, typically during the prehospital or tactical care phase, such as at the Point of Injury (POI), within a Casualty Collection Point (CCP), an Advanced Medical Post (AMP), or during medical evacuation between echelons of care.
- The record contains essential information on the patient's condition, diagnosis, treatments administered, medical interventions performed, and decisions regarding triage, evacuation, and handover.
- The Field Medical Record ensures continuity of medical information between the initial medical response and the definitive Hospital Medical Record (HMR).
- In a military context, it may correspond to a Field Casualty Card (FCC) or Tactical Evacuation Record, while in a civil or disaster medicine context it is equivalent to a Prehospital Patient Care Report (PCR).
- .

Non-Functional Requirements



➤ Access Rights

- The system shall implement access control based on defined roles, with permissions explicitly linked to those roles.
- User identification shall be performed by means of a password.
- As the system processes medical data, appropriate safeguards and precautions shall be applied to ensure confidentiality, integrity, and compliance with relevant regulations.

➤ Visibility

- The application shall be designed with sufficient visibility to ensure usability under varying light conditions. It shall remain fully operable for medical staff in both bright sunlight and complete darkness.

➤ Modularity

- The application shall be designed with a highly modular architecture. Modules shall be capable of being activated or deactivated by the administrator in accordance with operational needs.

➤ Configurability

- For each type of user and/or customer, screens shall be configurable by leveraging the available modules.

Non-Functional Requirements (2)



- Data Transfer Security
 - All data transfers shall be secured and encrypted to ensure confidentiality and integrity of medical information.
- Interoperability
 - The system shall operate primarily on a tablet (Android or iOS).
 - Data entered on the tablet shall be stored locally.
 - The system shall support transfer of this data to a central system via network connectivity.
 - If network connectivity is not available, data transfer shall be possible via USB.
 - The central system may be either cloud-based or hosted on a local server.
- Data Exchange
 - The system shall support the exchange of data with a variety of external services, including (but not limited to) the WHO, local hospitals, and governmental authorities.
- Print Capability
 - The system shall always provide the ability to generate and print the medical record, allowing it to be handed over to the patient when required.

Non-Functional Requirements (3)



- Printed Document QR Code
 - Each printed document shall include a QR code that allows the associated medical report to be quickly retrieved.
- International Standards
 - As the system shall be deployable internationally, it shall make use of widely adopted standards, including (but not limited to) the medical standard FHIR R7.
- Multilingual Support
 - As the system shall be deployable worldwide, it shall provide support for multiple languages to accommodate both medical staff and patients who speak a variety of languages.

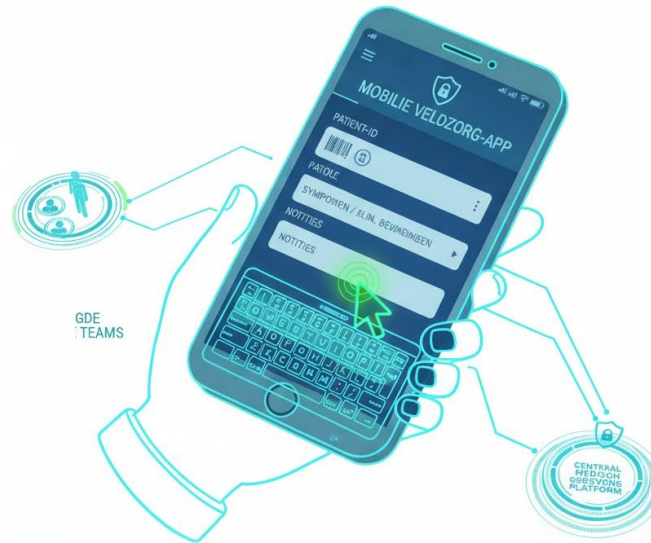
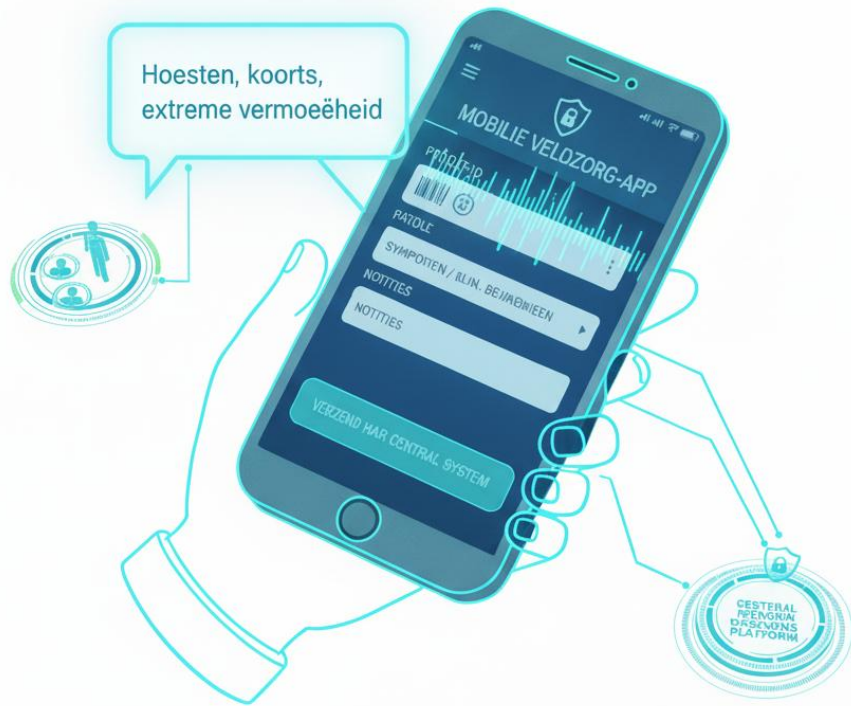


The Application

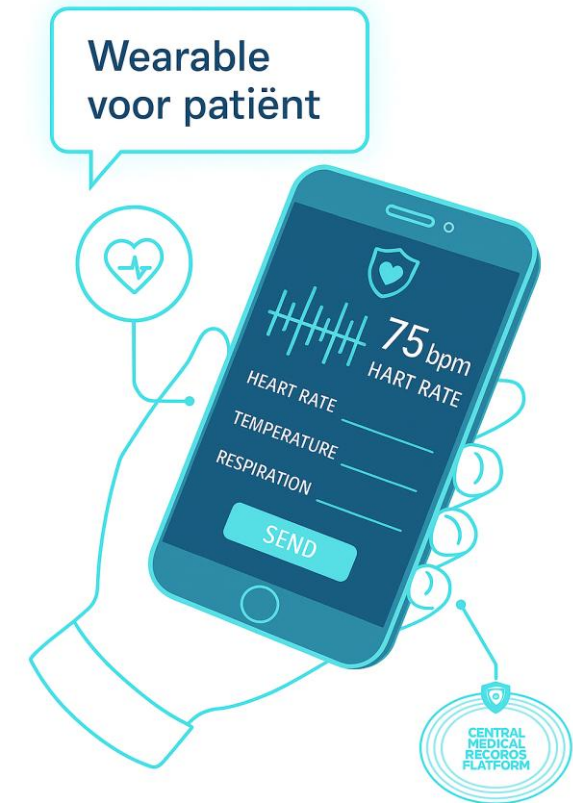
Medische Applicatie



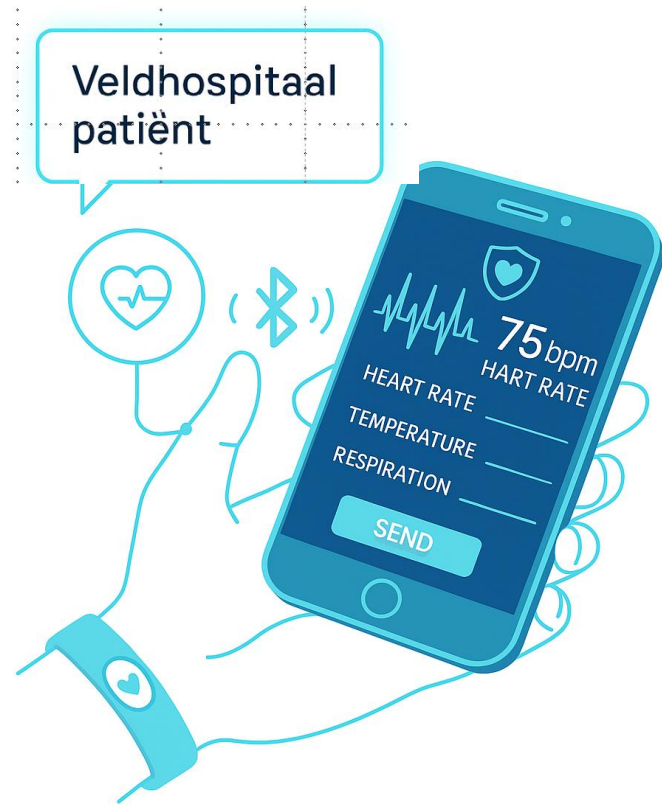
Medische Applicatie - Input



Bevoegde
Medische
Teams



Medische Applicatie – Data transfer



Bluetooth

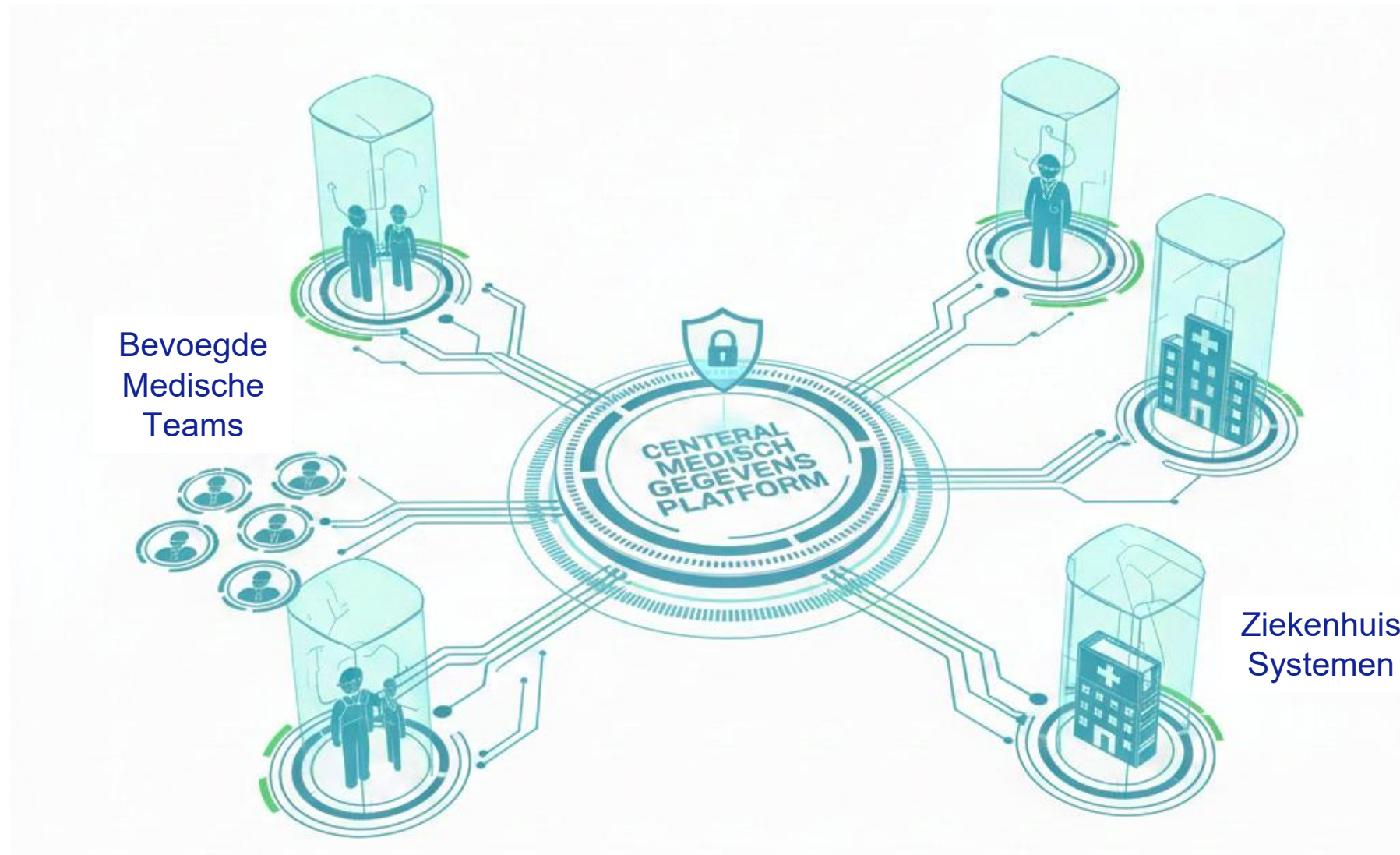


Wi-Fi



QR

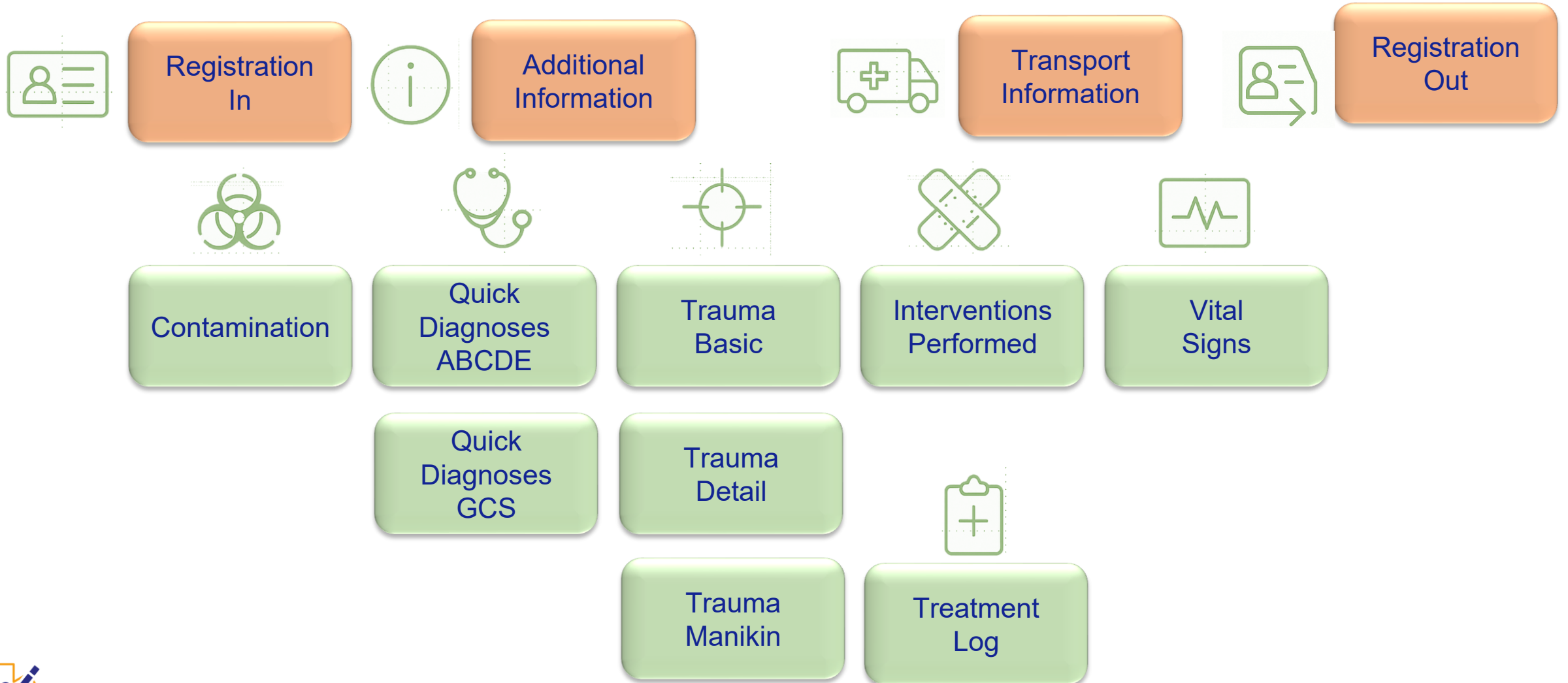
Centraal Platform





Modularity

Modularity



BITS - Integration



Person B12-02314



Registration
In



Additional
Information



Transport
Information



Registration
Out

Medical Information



Person B12-02314



Contamination



Quick
Diagnoses
ABCDE



Trauma
Basic



Interventions
Performed



Vital
Signs

Quick
Diagnoses
GCS

Trauma
Detail



Trauma
Manikin

Treatment
Log



BPREPARED



AMP Settings

Registration



Additional information



Contamination



Quick Diagnoses



Trauma



Interventions already performed



Vital Signs



Treatment Log



Transport information



Registration Out



English ▾



BPREPARED

franky.vandamme@bprepared.eu



 Manage users



 Manage AMP Modularity



 Manage incidents

